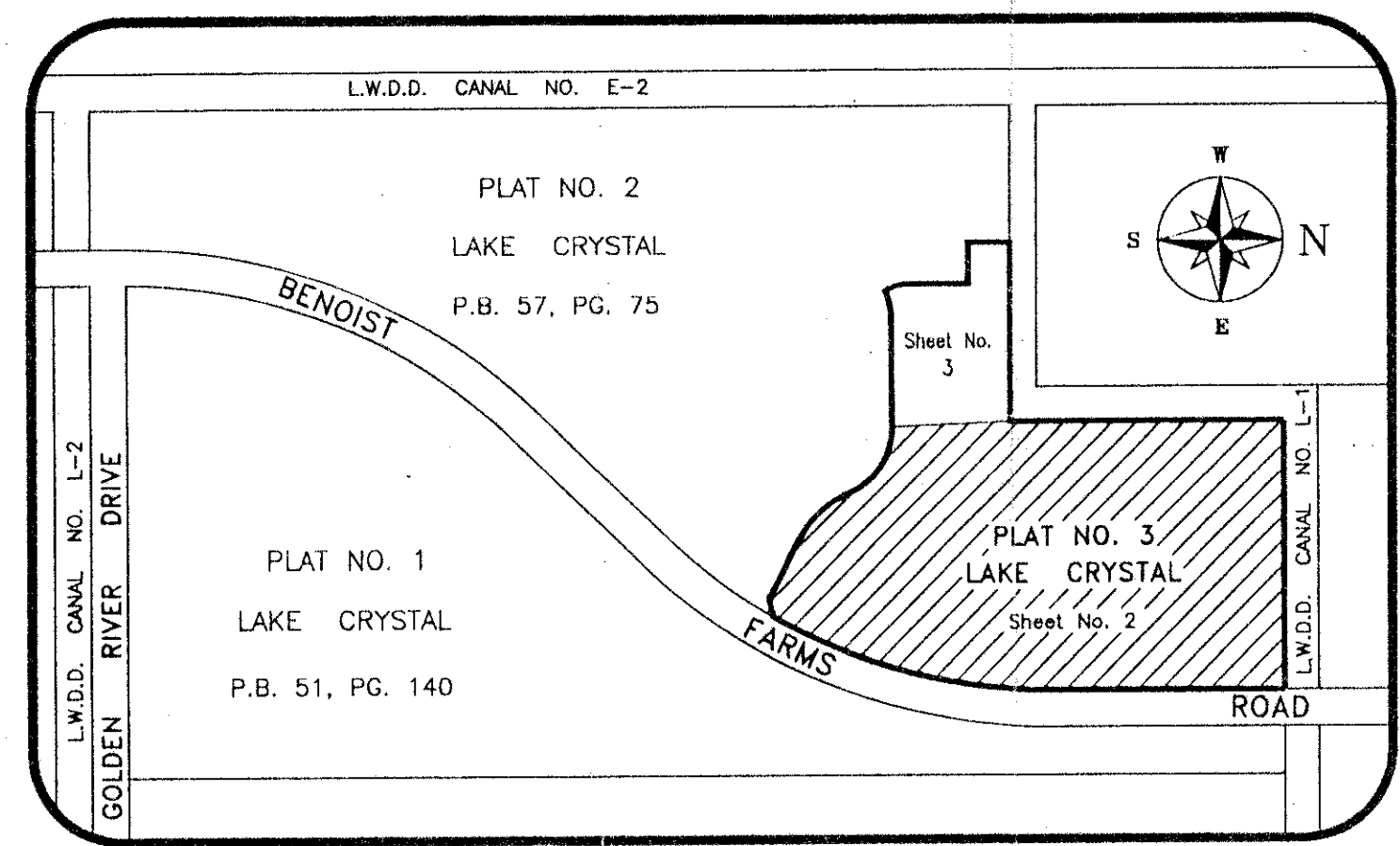


PLAT NO. 3 OF LAKE CRYSTAL

Ret

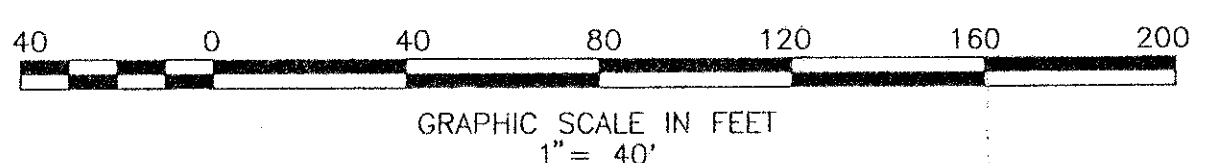
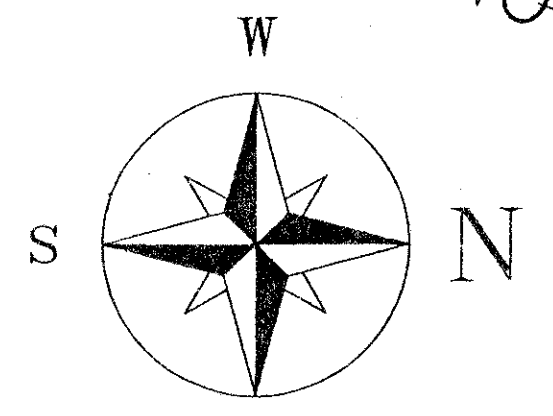
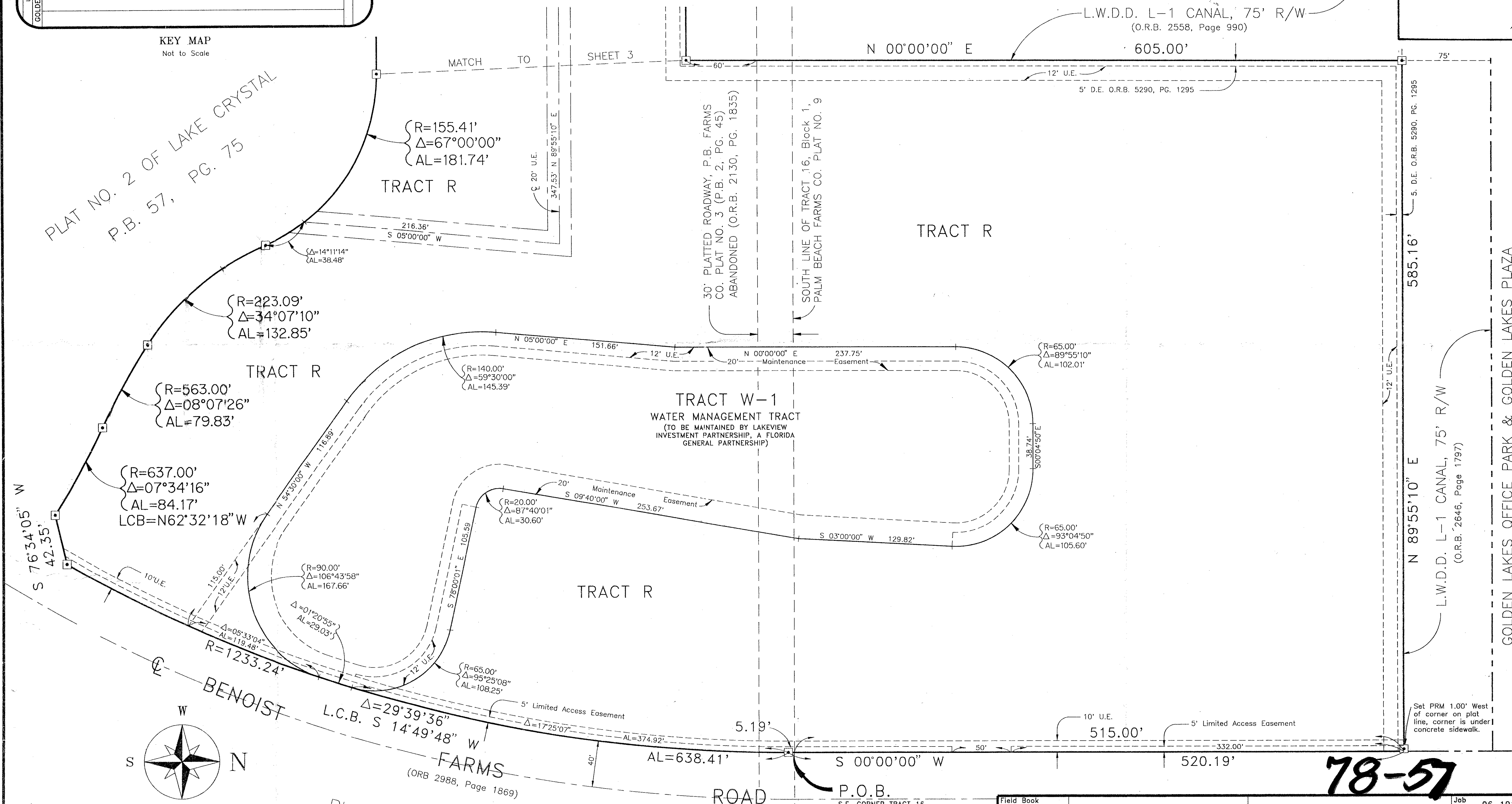
BEING A PORTION OF GOLDEN LAKES VILLAGE, P.U.D.

BEING A REPLAT OF A PARCEL OF LAND LYING PARTIALLY IN TRACT 16, BLOCK 1,
AS SHOWN ON THE PALM BEACH FARMS CO. PLAT NO. 9, AS RECORDED IN PLAT BOOK 5, PAGE 58
AND PARTIALLY IN TRACT 2, BLOCK 3, AS SHOWN ON THE PALM BEACH FARMS CO. PLAT NO. 3,
AS RECORDED IN PLAT BOOK 2, PAGES 45 THRU 54 INCLUSIVE, PUBLIC RECORDS OF
PALM BEACH COUNTY, FLORIDA SECTION 29, TOWNSHIP 43 SOUTH, RANGE 42 EAST
SHEET 2 OF 3 AUGUST, 1996



KEY MAP
Not to Scale

PLAT NO. 2 OF LAKE CRYSTAL
P.B. 57, PG. 75



PLAT NO. 1 OF LAKE CRYSTAL
P.B. 51, PG. 140

0251-003

78-57

Field Book	No. L-86 Pg. 48
Field	Matthes
Drawn	Bispott Owen
Checked	Shepherd
	Palomba

REO ENGINEERS & PLANNERS, INC.
1542 Donna Road
West Palm Beach
Florida
Telephone 561-687-0446

PLAT NO. 3 OF
LAKE CRYSTAL

Job No.	96-1015
Scale	1"=40'
Date	August, 1996
Sheet	2
of 3	
File No.	RF-2402-E

PLAT NO. 3 OF LAKE CRYSTAL
BOOK 78 PAGE 57
RECORDED IN PLAT BOOK 78 PAGE 57
DATE 8-1-96
BY: [Signature]

GOLDEN LAKES OFFICE PARK & GOLDEN LAKES PLAZA
P.B. 34, PG. 179